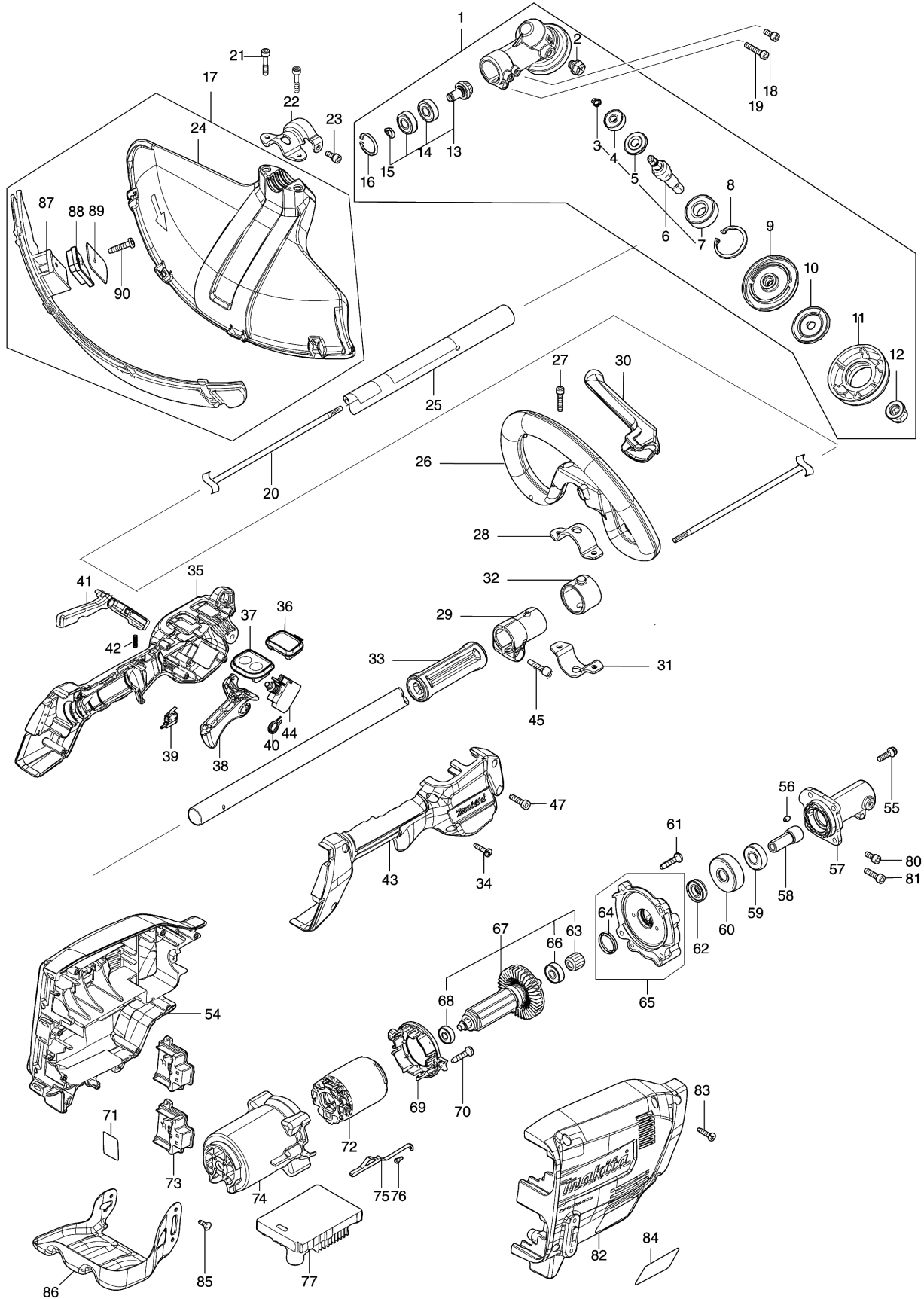


Model No.DUR369L CORDLESS GRASS TRIMMER



Model No.DUR369L CORDLESS GRASS TRIMMER

Item	Parts No.	Description	I/C	Qty	New/Old	Opt. 1	Opt. 2	Note
001	123853-1	GEAR CASE ASSEMBLY		1				
D10		INC. 2-16						
002	265590-2	+HEX.BOLT M8X10 WITH R		1				
003	232350-7	RING SPRING 6		1				
004	210030-5	BALL BEARING 627ZZ		1				
005	221484-1	SPIRAL BEVEL GEAR 19		1				
006	136233-2	CUTTER SHAFT ASS'Y		1				
D10		INC. 3-5,7						
007	211228-7	BALL BEARING 6202DDW		1				
008	257432-4	RETAINING RING R-35		1				
009	144312-2	RECEIVE WASHER COMPLETE		1				
010	347104-0	CLAMP WASHER		1				
011	457274-8	CUP US		1				
012	252236-9	HEX. LOCK NUT M10-17		1				
013	136235-8	SPIRAL BEVEL GEAR ASS'Y		1				
D10		INC. 14,15						
014	210049-4	BALL BEARING 609ZZ		2				
015	257986-1	RETAINING RING (EXT) S-9		1				
016	257987-9	RETAINING RING (INT)R-24		1				
017	191B54-1	PROTECTOR U 430 SET MG		1				
D10		INC. 24,87-90						
018	922216-6	HEX. SOCKET HEAD BOLT M5X14		1				
019	922242-5	HEX. SOCKET HEAD BOLT M5X25		1				
020	327056-1	SHAFT		1				
021	251513-6	H.S.H.BOLT M5X25		2				
022	347107-4	PROTECTOR CLAMP 24		1				
023	922216-6	HEX. SOCKET HEAD BOLT M5X14		1				
024	457271-4	PROTECTOR U 450		1				
025	140M97-6	SHAFT PIPE COMPLETE A		1				
C10	819312-8	MAKITA LOGO LABEL		1				
C20	819N87-3	CAUTION LABEL		1				
026	457267-5	LOOP HANDLE		1				
C10	263005-3	RUBBER PIN 6		1				
027	922234-4	H.S.H.BOLT M5X20 WITH WG		2				
028	347113-9	UPPER CLAMP 35		1				
029	457269-1	PIPE HOLDER 24		1				
030	144315-6	BARRIER COMPLETE		1				
C10	911128-8	P.H.SCREW M4X16 WITH WR		1				
031	347114-7	LOWER CLAMP 35		1				
032	424942-8	DAMPER		1				
033	451601-1	SPACER 24		1				

Please order the parts with part number.

Print Date 27/3/2020

Model No.DUR369L CORDLESS GRASS TRIMMER

Item	Parts No.	Description	I/C	Qty	New/Old	Opt. 1	Opt. 2	Note
034	266326-2	TAPPING SCREW 4X18		6				
035	183N26-2	GRIP SET		1				
C10	931202-6	HEX. NUT M5		1				
D10		INC. 43						
036	140K37-2	INDICATION CIRCUIT COMPLETE E		1				
037	140K35-6	SWITCH CIRCUIT COMPLETE G		1				
C10	819J26-9	SWITCH LABEL		1				
038	459758-2	SWITCH LEVER		1				
040	233622-3	TORSION SPRING 12		1				
041	459759-0	LOCK OFF LEVER		1				
042	233101-1	COMPRESSION SPRING 4		1				
043	183N26-2	GRIP SET		1				
C10	931202-6	HEX. NUT M5		1				
D10		INC. 35						
044	651436-2	SWITCH C3JW-1A-P-2		1				
045	922244-1	H.S.H.BOLT M5X25 WITH WG		1				
047	922233-6	H.S.H.BOLT M5X20 WITH WR		1				
054	183N23-8	HOUSING SET		1				
C10	263005-3	RUBBER PIN 6		4				
C20	252126-6	HEX. LOCK NUT M4-7		3				
D10		INC. 82						
055	911233-1	PAN HEAD SCREW M5X20		4				
056	263002-9	RUBBER PIN 4		1				
057	319919-5	PIPE BRACKET		1				
058	325811-5	SPINDLE HUB		1				
059	211131-2	BALL BEARING 6001DDW		1				
060	226931-7	HELICAL GEAR 29		1				
061	266459-3	TAPPING SCREW 5X25		4				
062	211150-8	BALL BEARING 6901ZZ		1				
063	226932-5	HELICAL GEAR 10		1				
064	213961-7	O RING 22		1				
065	136230-8	GEAR BOX ASS'Y		1				
D10		INC. 64						
066	210005-4	BALL BEARING 608DDW		1				
067	519587-6	ROTOR ASS'Y		1				
D10		INC. 63,66,68						
068	210062-2	BALL BEARING 607ZZ		1				
069	459764-7	BAFFLE PLATE		1				
070	266326-2	TAPPING SCREW 4X18		2				
071	856J21-8	DUR369L SERIAL NO. LABEL		1				
072	629443-3	STATOR		1				

Model No.DUR369L CORDLESS GRASS TRIMMER

Item	Parts No.	Description	I/C	Qty	New/Old	Opt. 1	Opt. 2	Note
073	644809-6	TERMINAL		2				
074	459763-9	MOTOR HOUSING		1				
075	347620-2	PLATE		1				
076	911102-6	PAN HEAD SCREW M4X6		1				
077	620C09-0	CONTROLLER		1				
080	922211-6	H.S.H.BOLT M5X12 WITH W		1				
081	922233-6	H.S.H.BOLT M5X20 WITH WR		1				
082	183N23-8	HOUSING SET		1				
C10	263005-3	RUBBER PIN 6		4				
C20	252126-6	HEX. LOCK NUT M4-7		3				
D10		INC. 54						
083	266326-2	TAPPING SCREW 4X18		7				
084	856J12-9	DUR369L NAME PLATE		1				
085	251314-2	+ SCREW M4X12		3				
086	347563-8	BATTERY GUARD		1				
087	144316-4	PROTECTOR U EXT. 420-450 COMP		1				
088	459765-5	CUTTER EXTENSION		1				
089	347115-5	CUTTER		1				
090	266459-3	TAPPING SCREW 5X25		1				
A01	125520-4	BAND ASSEMBLY		1				
A02	197993-1	TRIMMER HEAD 95-M10L SET ME		1				
A03	126642-3	PLASTIC BLADE ASSEMBLY255-M10L		1				
A04	144392-8	TOOL COVER 2T		1				
A05	198345-9	CUTTER BLADE 255-2 SET ME		1				
A06	782238-6	BOX WRENCH 17		1				
A07	783202-0	HEX. WRENCH 4		1				
A08	831304-7	ACCESSORY BAG		1				

Please order the parts with part number.

Print Date 27/3/2020