



JBM-4

Bench Mortiser

10000084M ~230V 50Hz

PARTS LIST

JPW (TOOL) AG

Ackerstrasse 45,
CH-8610 Uster,
Switzerland

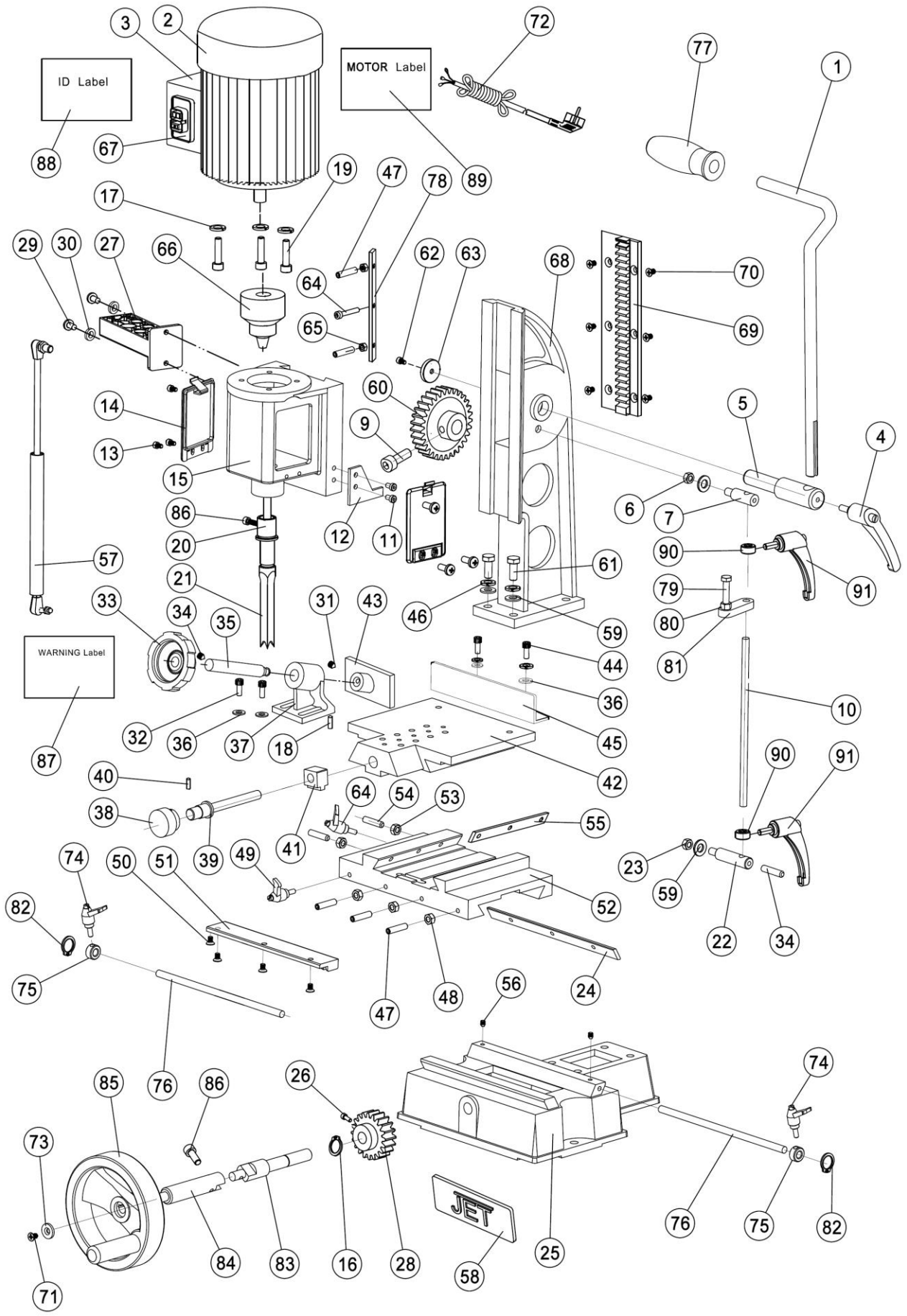
www.jettools.com

P-10000084M

2021-11



Parts Breakdown for JBM-4 Mortiser



Parts List for JBM-4 Mortiser

Index No.	Part No.	Description	Size	Qty.
1	JBM4-001	Operating Lever		1
2	JBM4-002	Motor	230V 50Hz	1
	JBM4-002MF	Motor Fan (not shown)		1
	JBM4-002SCE	Starting Capacitor(not shown)	20uF, 450V	1
	JBM4-002MC	Motor Cover (not shown)		1
	JBM4-002BL	Motor Label (not shown)		1
3	JBM4-003	Switch Box		1
4	JBM4-004	Handle Screw		1
5	JBM4-005	Operating Shaft		1
6	JBM4-006	Hex. Nut	M10	1
7	JBM4-007	Screw		1
8				
9	JBM4-009	Set Screw		1
10	JBM4-010	Guide Column		1
11	JBM4-011	Socket Head Cap Screw	M6x12	2
12	JBM4-012	Localizer		1
13	JBM4-013	Cap Screw	M5x8	6
14	JBM4-014	Cover		2
15	JBM4-015	Headstock Casing		1
16	JBM4-016	C-Ring		1
17	JBM4-017	Washer	6	3
18	JBM4-018	Pin		1
19	JBM4-019	Socket Head Cap Screw	M6x25	1
20	JBM4-020	Chisel Bushing		1
21*	JBM4-021	Chisel (Optional Accessory)		NA
22	JBM4-022	Screw		1
23	JBM4-023	Hex Nut	M10	1
24	JBM4-024	Drift		1
25	JBM4-025	Base		1
26	JBM4-026	Socket Head Cap Screw	M6x16	2
27	JBM4-027	Tool Holder		1
28	JBM4-028	Gear	10	1
29	JBM4-029	Socket Head Cap Screw	M6x16	2
30	JBM4-030	Flat Washer	6	2
31	JBM4-031	Set Screw	M6x8	1
32	JBM4-032	Socket Head Cap Screw	M8x16	2
33	JBM4-033	Table Clamp Handwheel		1
34	JBM4-034	Set Screw	M6x10	1
35	JBM4-035	Lead Screw		2
36	JBM4-036	Flat Washer	8	1
37	JBM4-037	Connecting Bend		1
38	JBM4-038	Table Control Knob		1
39	JBM4-039	Lead Screw		1
40	JBM4-040	Pin	4x30	1
41	JBM4-041	Lead Nut		1
42	JBM4-042	Table		1
43	JBM4-043	Clamp Plate		1
44	JBM4-044	Socket Head Cap Screw	M6x16	4
45	JBM4-045	Fence		1
46	JBM4-046	Spring Washer	10	4
47	JBM4-047	Set Screw	M6x30	3
48	JBM4-048	Hex Nut	M6	3
49	JBM4-049	Handle Screw		1
50	JBM4-050	Flat Screw	M6x12	4
51	JBM4-051	Rack		1
52	JBM4-052	Sliding Plate		1
53	JBM4-053	Hex Nut	M6	2

Parts List for JBM-4 Mortiser

Index No.	Part No.	Description	Size	Qty.
54	JBM4-054	Set Screw	M6x30	2
55	JBM4-055	Drift		1
56	JBM4-056	Set Screw	M6x6	2
57	JBM4-057	Gas Spring		1
58	JET-92	JET LOGO	92x38mm	1
59	JBM4-059	Flat Washer		4
60	JBM4-060	Gear		1
61	JBM4-061	Hex Bolt	M10x30	4
62	JBM4-062	Flat Screw	M6x16	1
63	JBM4-063	Flat Washer		1
64	JBM4-064	Handle Screw		1
65	JBM4-065	Hex Nut	M6	2
66	JBM4-066	Chuck	1-13mm	1
67	JFM6-057	Switch	DZ04-2	1
68	JBM4-068	Column		1
69	JBM4-069	Rack		1
70	JBM4-070	Flat Screw	M6x16	6
71	JBM4-071	Flat Screw	M6x14	1
72	JBM4-072	Power Cord		1
73	JBM4-073	Flat Screw	6	1
74	JBM4-074	Handle Screw		2
75	JBM4-075	Setting Collar		2
76	JBM4-076	Distance Stop Rod		2
77	JBM4-077	Grip Sleeve		1
78	JBM4-078	Drift		1
79	JBM4-079	Hex Bolt	M8x50	1
80	JBM4-080	Hex Nut	M8	1
81	JBM4-081	Plate		1
82	JBM4-082	C -Ring		2
83	JBM4-083	Gear Shaft		1
84	JBM4-084	Handle Shaft		1
85	JBM4-085	Hand Wheel		1
86	JBM4-086	Socket Head Cap Screw	M6x25	1
87	JBM4-087	JET Warning Label		1
88	JBM4-088	JET ID Label		1
89	JBM4-089	JET Motor Label		1
90	JBM4-090	Setting Collar		2
91	JBM4-091	Handle Screw		2

Optional Accessory* --- Chisel

21* JBM4-021 Chisel 1

* Optional Accessory – see your dealer to order.

Wiring Diagram for JBM-4 Mortiser

1000084M..... ~ 230V, 50Hz

	colour of strands	Litzenfarben	couleur des cordons
BK	black	schwarz	noir
WH	white	weiß	blanc
BU	blue	blau	bleu
RD	red	rot	rouge
BN	brown	braun	brun
GY	grey	grau	gris
GNYE	green-yellow	grün-gelb	vert-jaune

	meaning of symbol	Bedeutung der Zeichen	interprétation
M	motor	Motor	moteur
S	switch	Schalter	interrupteur
C1	Condenser of running	Kondensator	condensateur
C2	Condenser of Starting	Kondensator	condensateur
n	centrifugal switch	Fliehkraftschalter	déclencheur centrifuge
OL	overload cut-off	Überlastschuttschalter	déclencheur surcharge
LS	limit switch	Positionsendschalter	micro
SB	E-stop	Not-Aus Taster	arret d'urgence

